

# SAFE® GELDIET WATER

## Definition

Nutritional and hydration solution for animal.  
With 98% water this gel is used to provide a water source.  
Thermoreversible at 70-90°C to add a compound or a drug.

## Product Purpose

For stressful periods: weak animals, post-operative, transport, breeding...  
To be used within the context of experimental protocols.  
Can be distributed as a complement to water.



Picture indicative only

## Directions for Use

### DISTRIBUTION

#### Period

In accordance with protocol and animal welfare.  
Adaptation before use is recommended.

#### Method

- Ad libitum or rationed according to experimental protocols.
- Place the open cup on the cage floor, or remove the cup and place directly in the cage (feeder, floor, on cup or Petri dish).
- Keep possibly fresh water and diet available. Can be portioned.

### DAILY CONSUMPTION

Varies depending on species, weight and age.

### STORAGE

Store in a clean, dry and cool place, protected from light.  
Store at 4 ° C.

### SHELF-LIFE from the date of production

12 months in the original packaging.  
After opening the cup, the product can be kept 5 days maximum.

## Product Presentation

\*All SAFE® and SDS® diets are available with different packaging, irradiation and with analytical data on demand.  
Selected solutions of the most sold items.

DIET	STANDARD PACKAGING	USUALLY AVAILABLE WITH IRRADIATION DOSE
SAFE® GELDIET Water*	60 x 100 g 30 cups in 2 plastic pouches	Min. 25 kGy

## Irradiation

Minimum 25 kilograys.

## Product Form

### GEL

Diameter	- mm
Crushing resistance	- kgf/cm <sup>2</sup>
Abrasion resistance	- %
Specific mass	- g/l
Average pellet weight	- g
Average pellet length	- mm

Also available powdered on demand.

## SAFE® GELDIET WATER

### Ingredients

Water, hydrocolloids, preservatives.

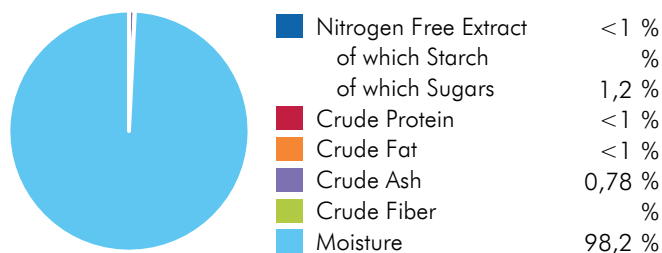
### Analysis End Product

TOTAL PER KG

#### CENTESIMAL COMPOSITION

Forages & Fibers	1,8 %
Others	<1 %
Water	98,2 %

#### NUTRITIONAL COMPOSITION



#### ENERGY CONTENT

	MJ/kg	kcal/kg	%
ME Pig	0,21	49,4	
ME Atwater	0,17	41,1	
Energy from proteins		< 10	
Energy from lipids		< 10	
Energy from NFE	0,15	36,4	88,7

More information on energy calculation: [www.safe-lab.com](http://www.safe-lab.com)

#### MINERALS

	END PRODUCT
Calcium	333 mg
Phosphorus	7,8 mg
Sodium	92,6 mg
Potassium	307 mg
Magnesium	170 mg
Manganese	<1 mg
Iron	<5 mg
Copper	<1 mg
Zinc	870 mg

#### VITAMINS

	END PRODUCT
Vitamin E	1,1 IU
Vitamin B1	<0,2 mg
Vitamin B2	<0,5 mg
Vitamin B3	<0,8 mg
Vitamin B5	<0,5 mg
Vitamin B6	<0,5 mg
Choline	<100 mg

For the welfare of animals SAFE® bedding and environmental enrichment such as SAFE® block gnawing logs and SAFE® nesting materials should be available in the cage.

The values of the end products are given as indication only and have no contractual value. They are calculated averages of product analysis results before irradiation and autoclaving. Depending on production conditions, storage and analytical methods variations may occur. An analysis is performed on request.

Produced in France